

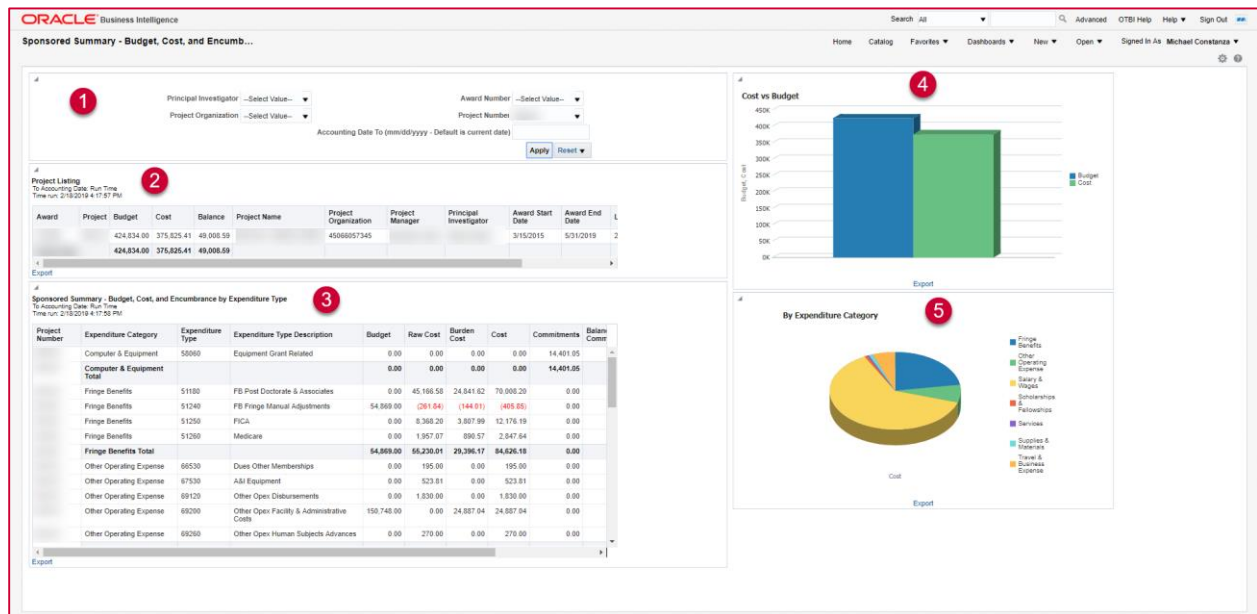
SPONSORED SUMMARY – BUDGET, COST, AND ENCUMBRANCE BY EXPENDITURE TYPE

OVERVIEW

This dashboard summarizes a Sponsored Project's Budget, Cost, and Encumbrance by Expenditure Type with current balances both with and without encumbrances. Users can query by **Project Number**, **Award Number**, **Project Organization**, and **Principal Investigator**. They can also filter by the **Accounting Date To** parameter in order to get inception-to-date project balances as of the desired date. It is intended to provide data equivalent to that of the PJ 071 report.

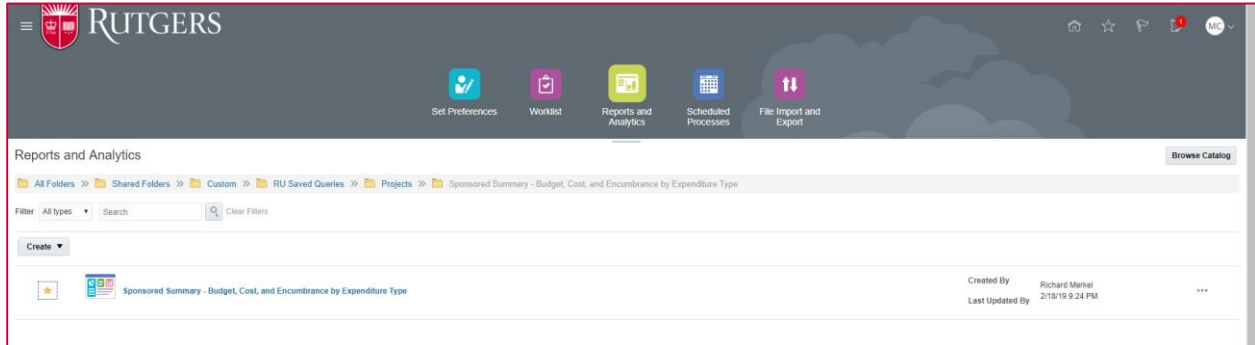
The dashboard includes

1. Parameters
2. A Project Listing with basic project/award attributes of the queried projects
3. A Summary Report with balances by expenditure type
4. A Budget vs Cost bar graph
5. A pie chart showing costs by expenditure category



QUERY LOCATION

Tools > Reports and Analytics > Shared Folders > Custom > RU Saved Queries > Projects > Sponsored Summary – Budget, Cost, And Encumbrance by Expenditure Type



EXPORTING DATA

There is an **Export** button under each section of the dashboard that allows you to export the data in your preferred format.

Sponsored Summary - Budget, Cost, and Encumbrance by Expenditure Type
To Accounting Date: Run Time
Time run: 2/18/19 4:42 PM

Project Number	Expenditure Category	Expenditure Type	Expenditure Type Description	Budget	Raw Cost	Burden Cost	Cost	Commitments	Balance
	Computer & Equipment	58090	Equipment NonCapitalized	0.00	5,830.10	3,206.56	9,036.66	1,685.16	
	Computer & Equipment	74104	Recovery Lab Equipment Core Use	0.00	186.30	102.46	288.77	21.24	
	Computer & Equipment Total			0.00	6,016.40	3,309.02	9,325.42	1,706.40	
	Fringe Benefits	51180	FB Post Doctorate & Associates	0.00	11,283.97	6,206.18	17,490.15	0.00	
	Fringe Benefits	51240	FB Fringe Manual Adjustments	97,121.45	(609.95)	(335.47)	(945.42)	0.00	
		51250	FICA	0.00	1,791.76	985.47	2,777.23	0.00	
		51260	Medicare	0.00	641.06	352.58	993.64	0.00	
	Professional Services Total			97,121.45	13,106.84	7,208.76	20,315.60	0.00	
	Equipment Expense	67040	Capital Purchase Equipment	0.00	7,555.54	0.00	7,555.54	0.00	
	Other Expense	69330	Other Opex Other DGCA Expenses	0.00	0.00	0.00	0.00	0.00	
	Other Expense Total			0.00	7,555.54	0.00	7,555.54	0.00	
	Professional Services	55250	Professional Service Publication	3,100.00	0.00	0.00	0.00	0.00	
	Professional Services Total			3,100.00	0.00	0.00	0.00	0.00	

Export

Export options: PDF, Excel 2007+, Powerpoint 2007+, Web Archive (.mht), Data